

WHAT IS A FOREST

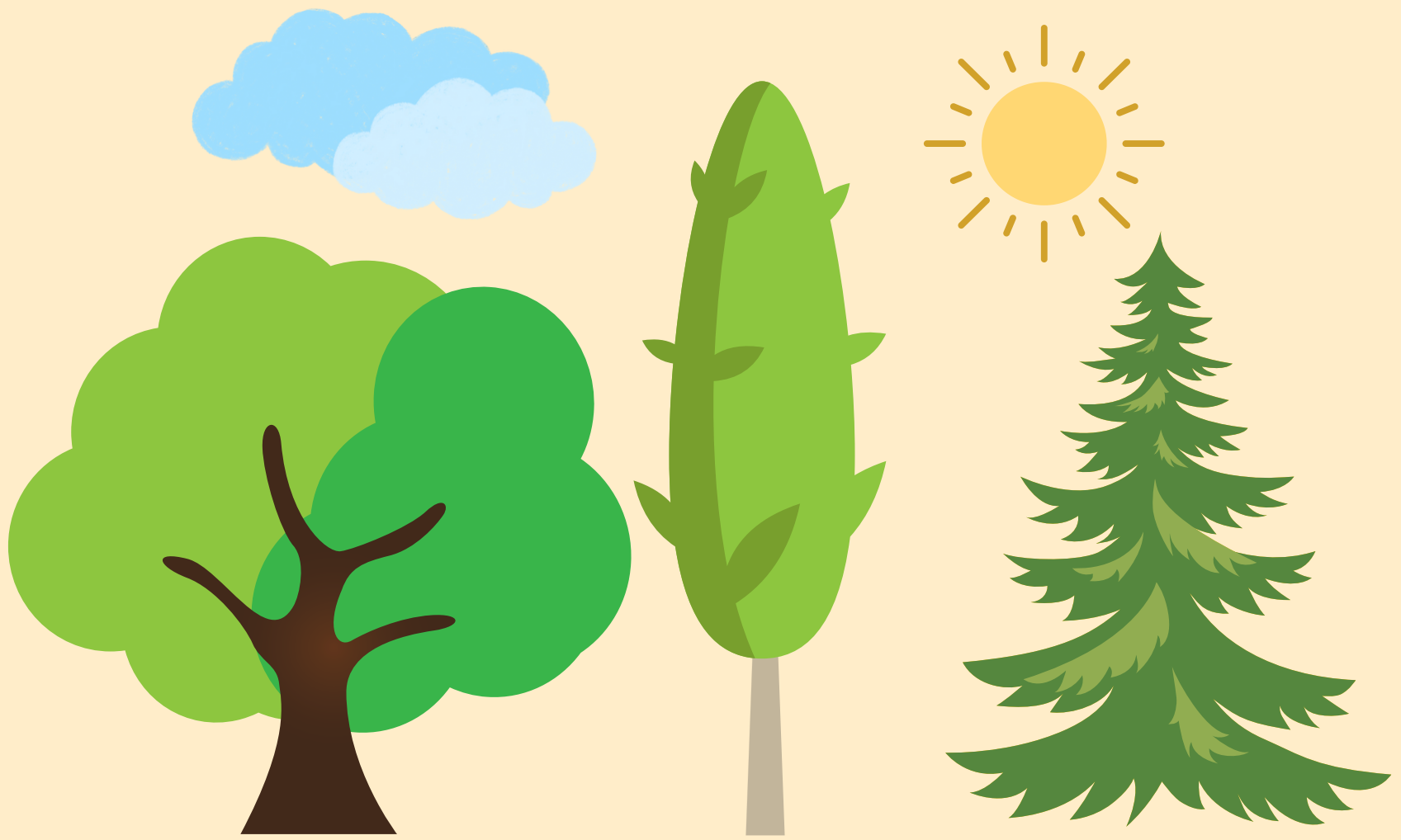


CITIZEN ENGAGEMENT



SILVANUS

www.silvanus-project.eu



The definition of the word "Forest" varies depending on the region and country, influenced by factors like land use, vegetation type, and altitude.

There are many definitions worldwide. Here, we provide a general definition by FAO (**F**ood and **A**griculture **O**rganization of the United Nations):

FOREST

Land spanning more than 0.5 hectares with trees higher than 5 meters and a canopy cover of more than 10 percent, or trees able to reach these thresholds in situ. It does not include land that is predominantly under agricultural or urban land use.



OTHER WOODED LAND

Land not classified as “Forest”, spanning more than 0.5 hectares; with trees higher than 5 meters and a canopy cover of 5-10 percent, or trees able to reach these thresholds in situ; or with a combined cover of shrubs, bushes and trees above 10 percent. It does not include land that is predominantly under agricultural or urban land use.





NATURAL FOREST

A forest consisting of indigenous trees, not classified as a forest plantation.



FOREST PLANTATION

A forest created through planting or seeding as part of afforestation or reforestation efforts. It may contain introduced species or indigenous species.