

APPLICATIONS OF FIRE RISK MAPS



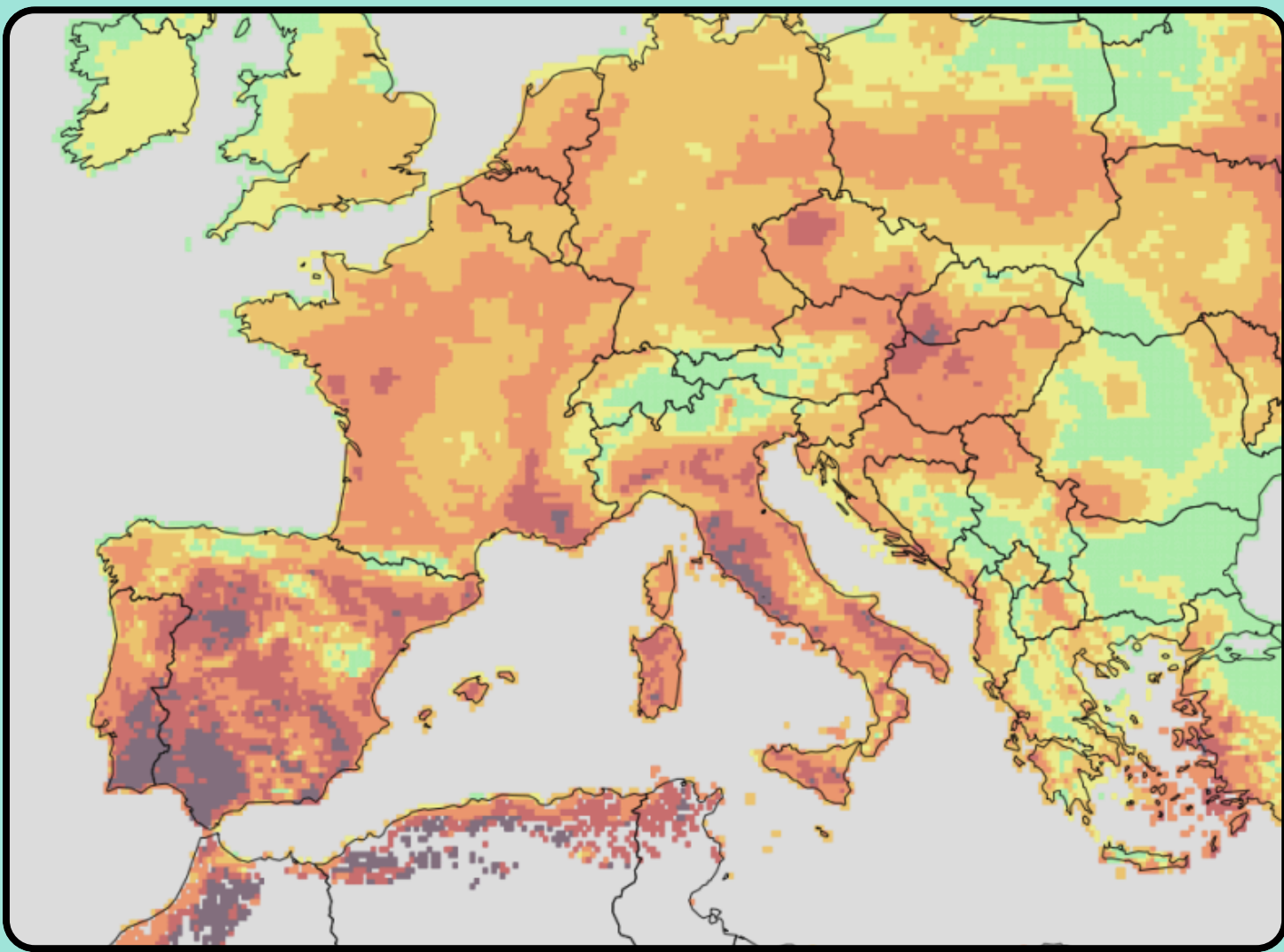
CITIZEN ENGAGEMENT



SILVANUS

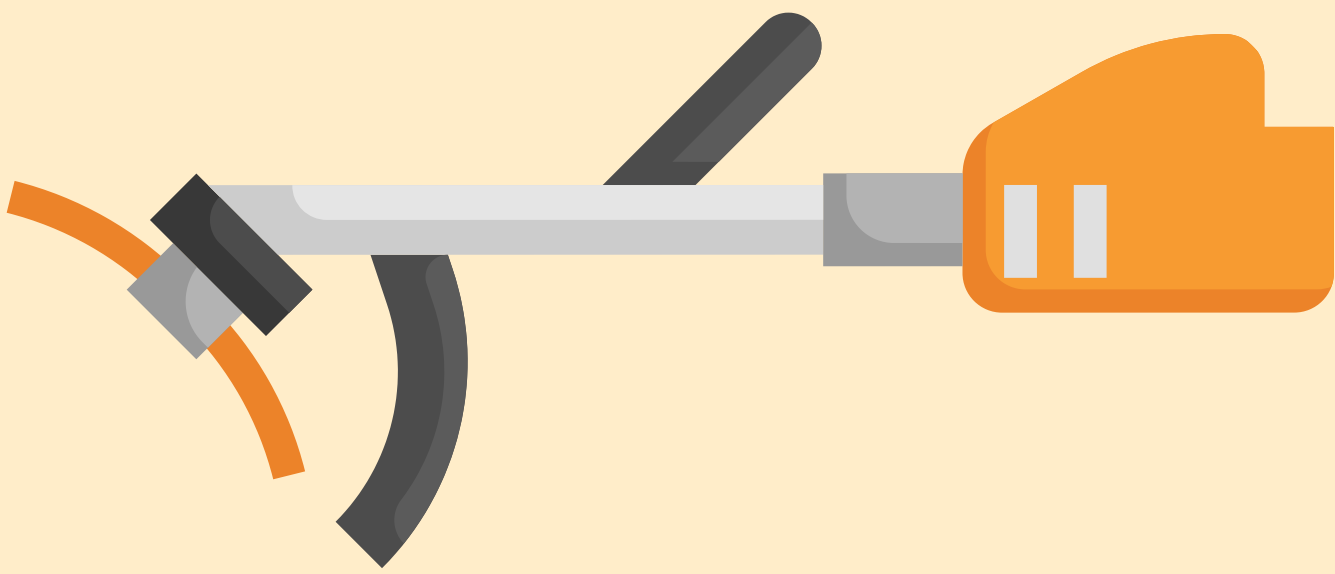
www.silvanus-project.eu

Fire risk maps are essential tools in forest management, especially in the context of wildfire prevention, preparedness, and response.



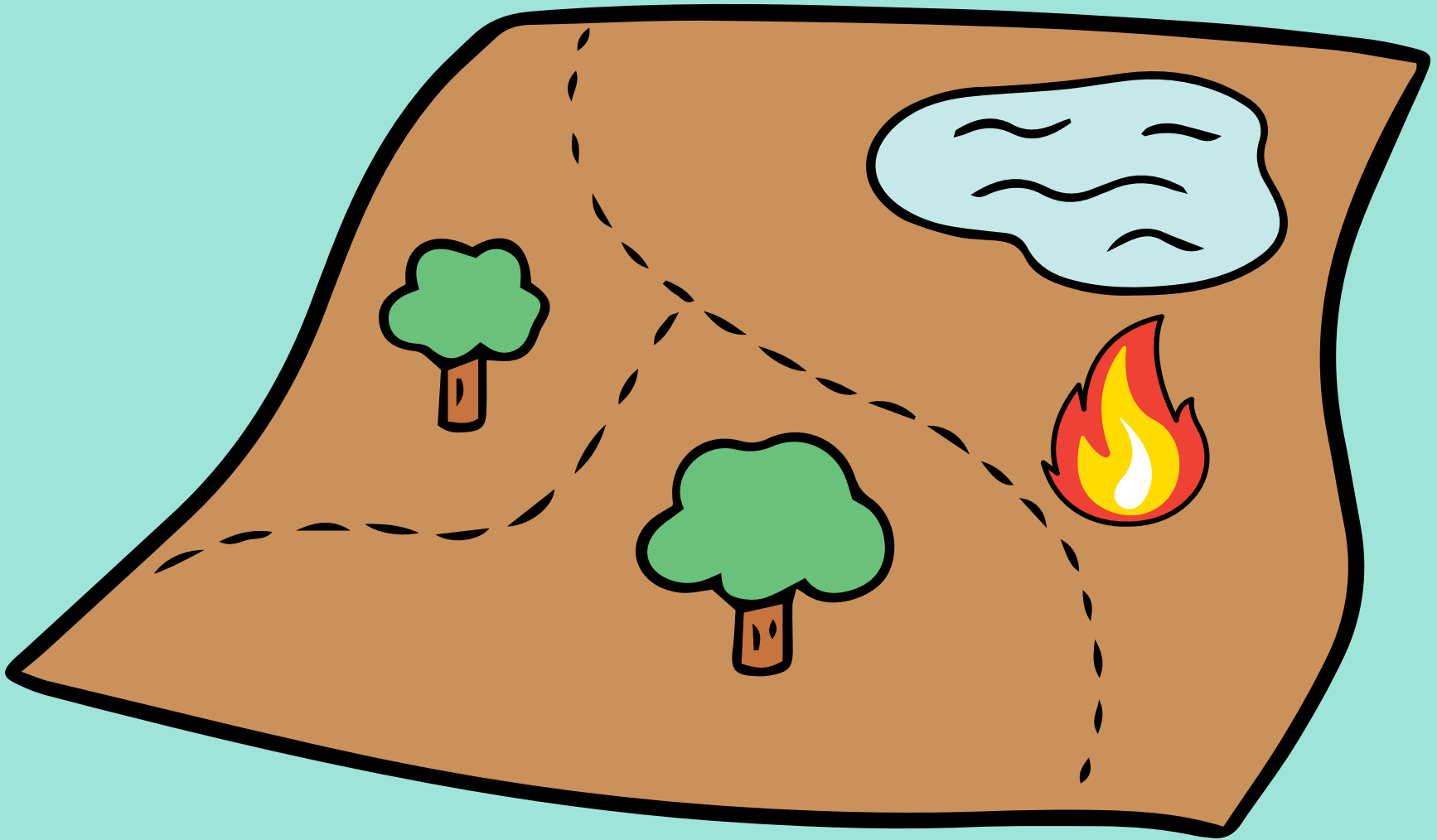
They leverage spatial data analysis to predict potential fire outbreaks, helping to minimize risks and impacts. Here is how these maps are applied across different stages of wildfire management:

WILDFIRE PREVENTION

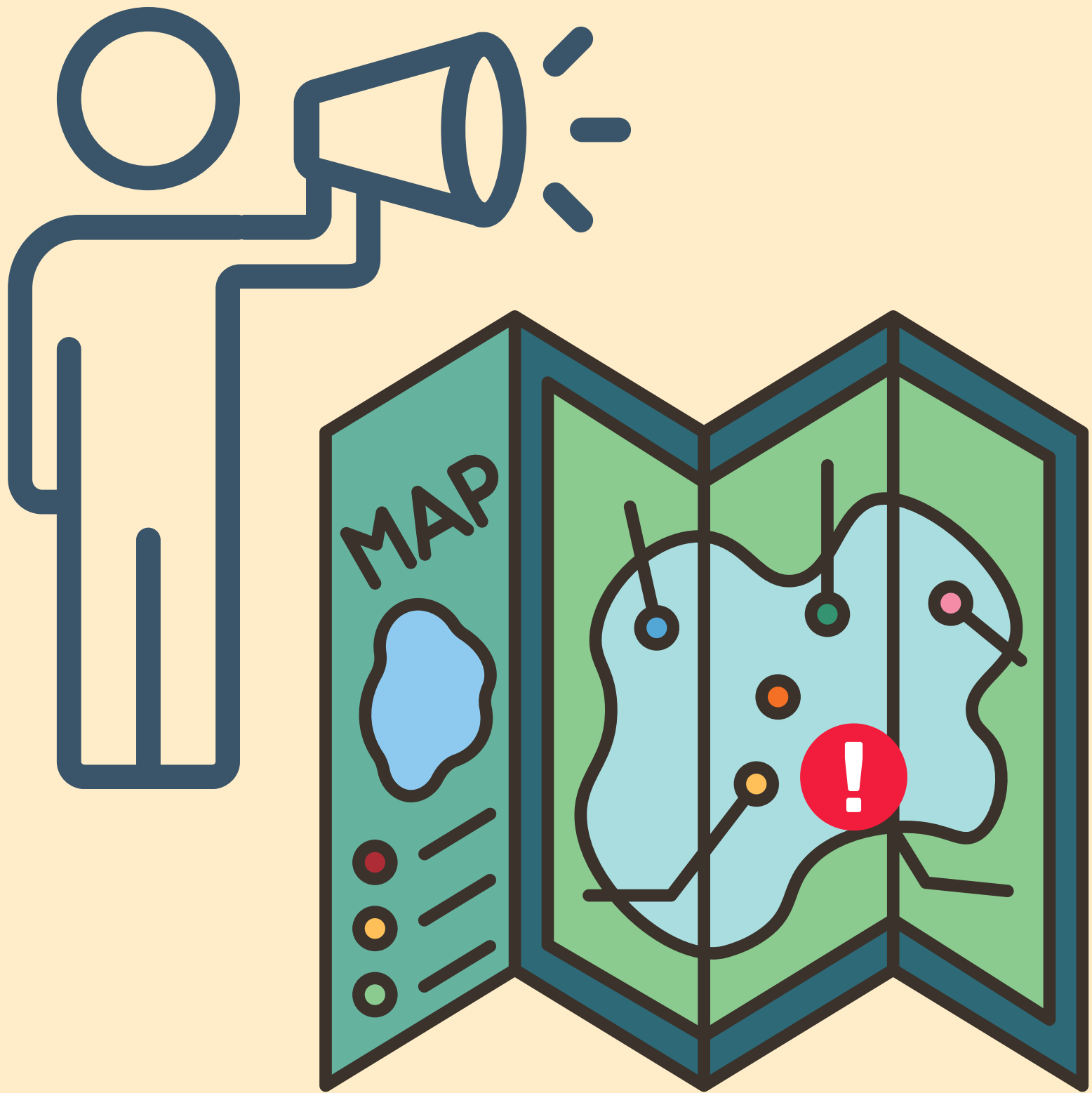


Fuel Management

Fire risk maps identify areas with high fire risk due to dense vegetation or dead material that can serve as fuel. These areas can then be targeted for fuel reduction practices such as controlled burns, mechanical thinning, or removal of deadwood, thereby reducing the intensity and spread of potential fires.



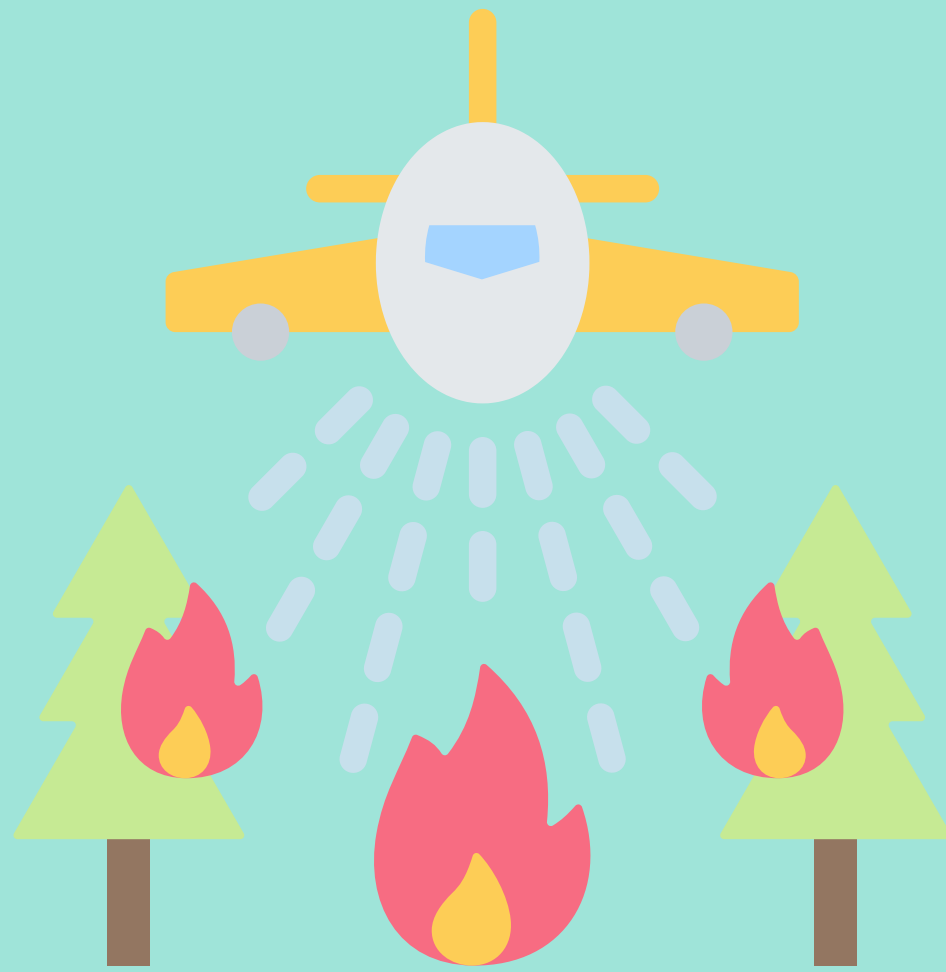
Regulation and Policy Making: By highlighting areas of high risk, these maps inform the development of regulations and policies around land use, building codes, and firebreaks to prevent fire ignition and spread.



Public Awareness and Education

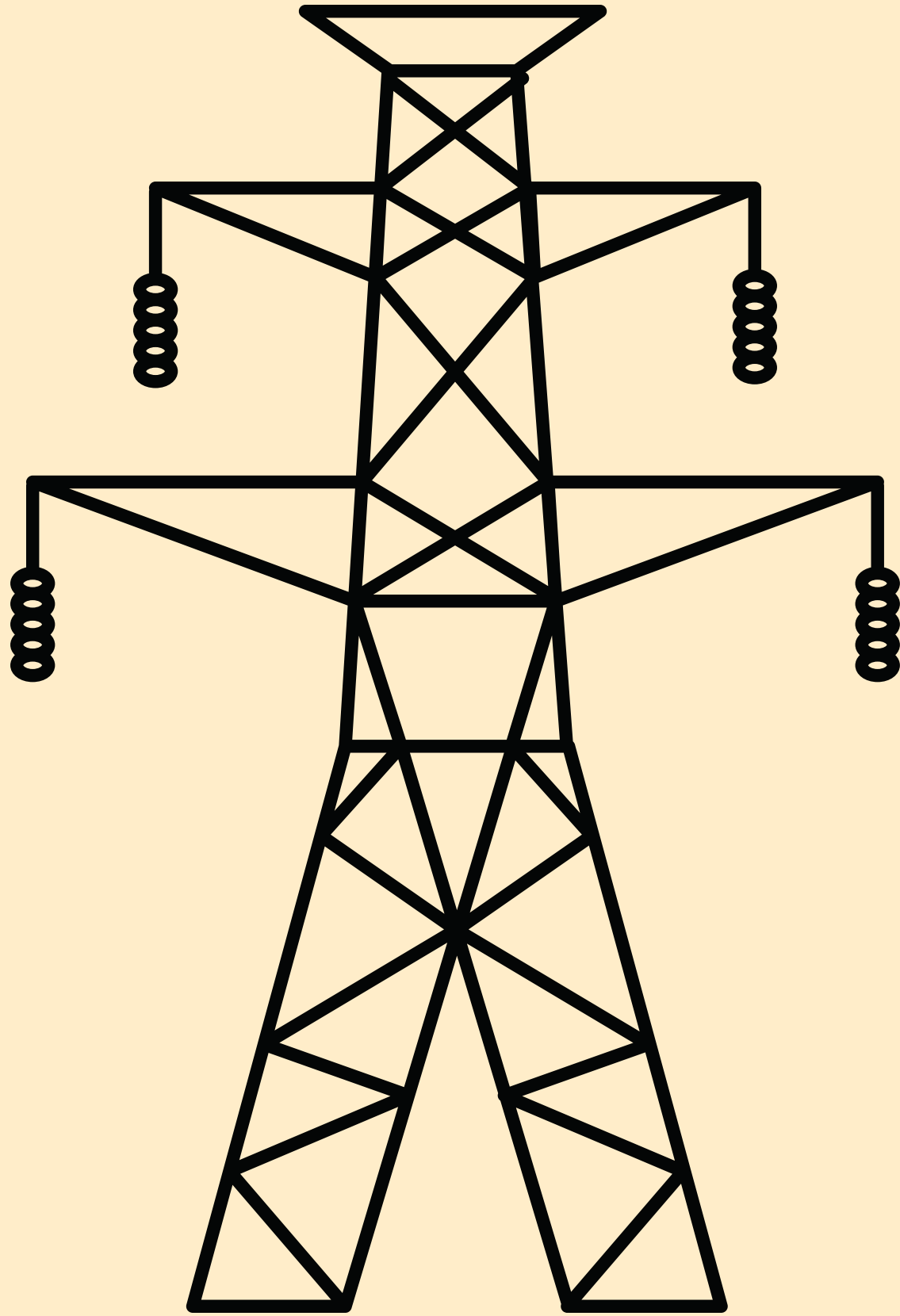
Fire risk maps are used in public awareness campaigns to educate communities about fire risk levels in their areas, promoting fire-safe behaviours and preparedness measures.

WILDFIRE PREPAREDNESS



Resource Allocation and Planning

Forest managers and emergency services use fire risk maps to allocate resources efficiently, planning where to station firefighting equipment and personnel in anticipation of higher fire risks.



Infrastructure Protection

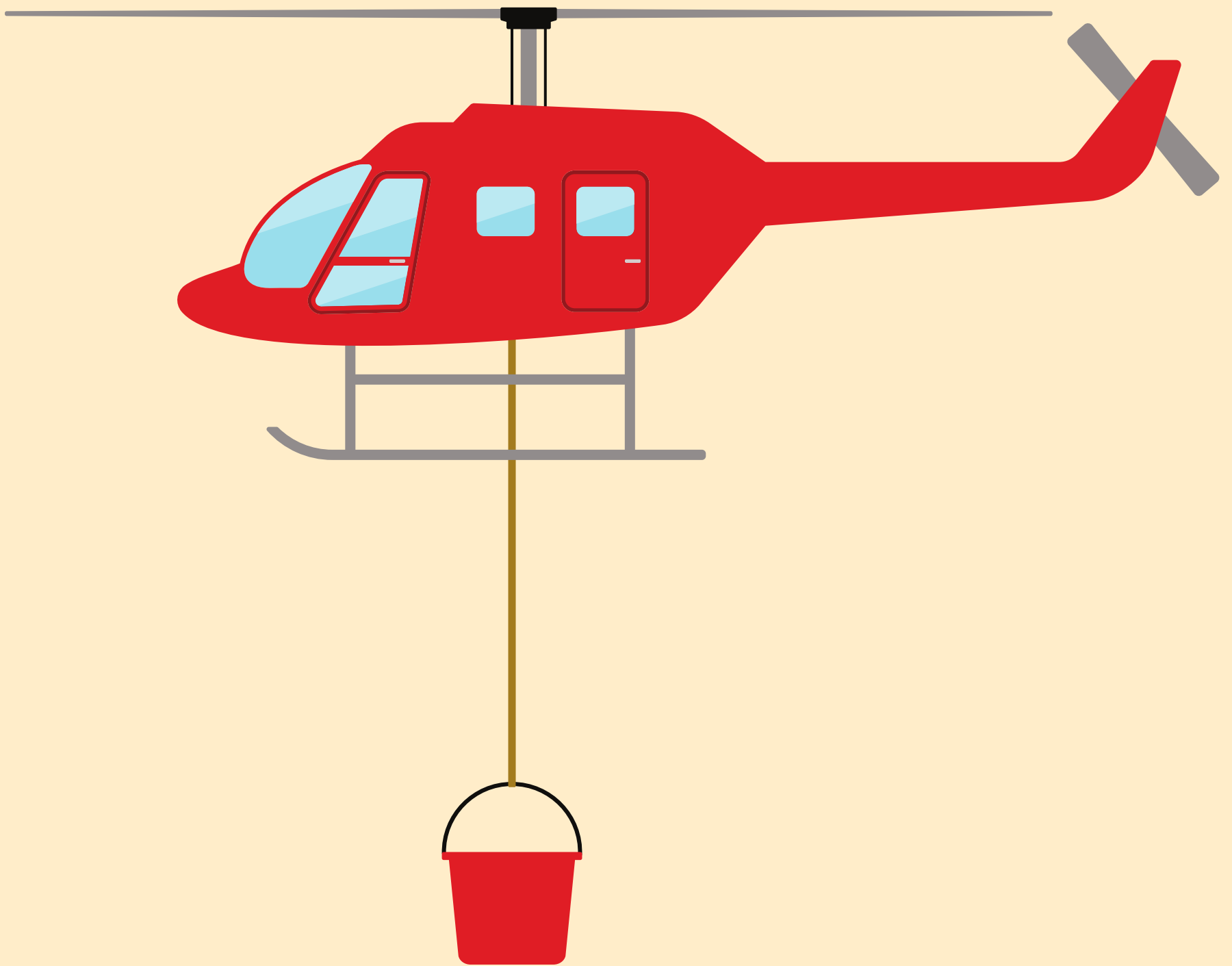
These maps help identify critical infrastructure at risk, such as power lines, roads, and residential areas, guiding the implementation of protective measures like clearing vegetation to create defensible spaces.



Evacuation Planning

High-risk areas identified on the maps are prioritized for evacuation planning, including designing escape routes and establishing safe zones for residents.

WILDFIRE RESPONSE

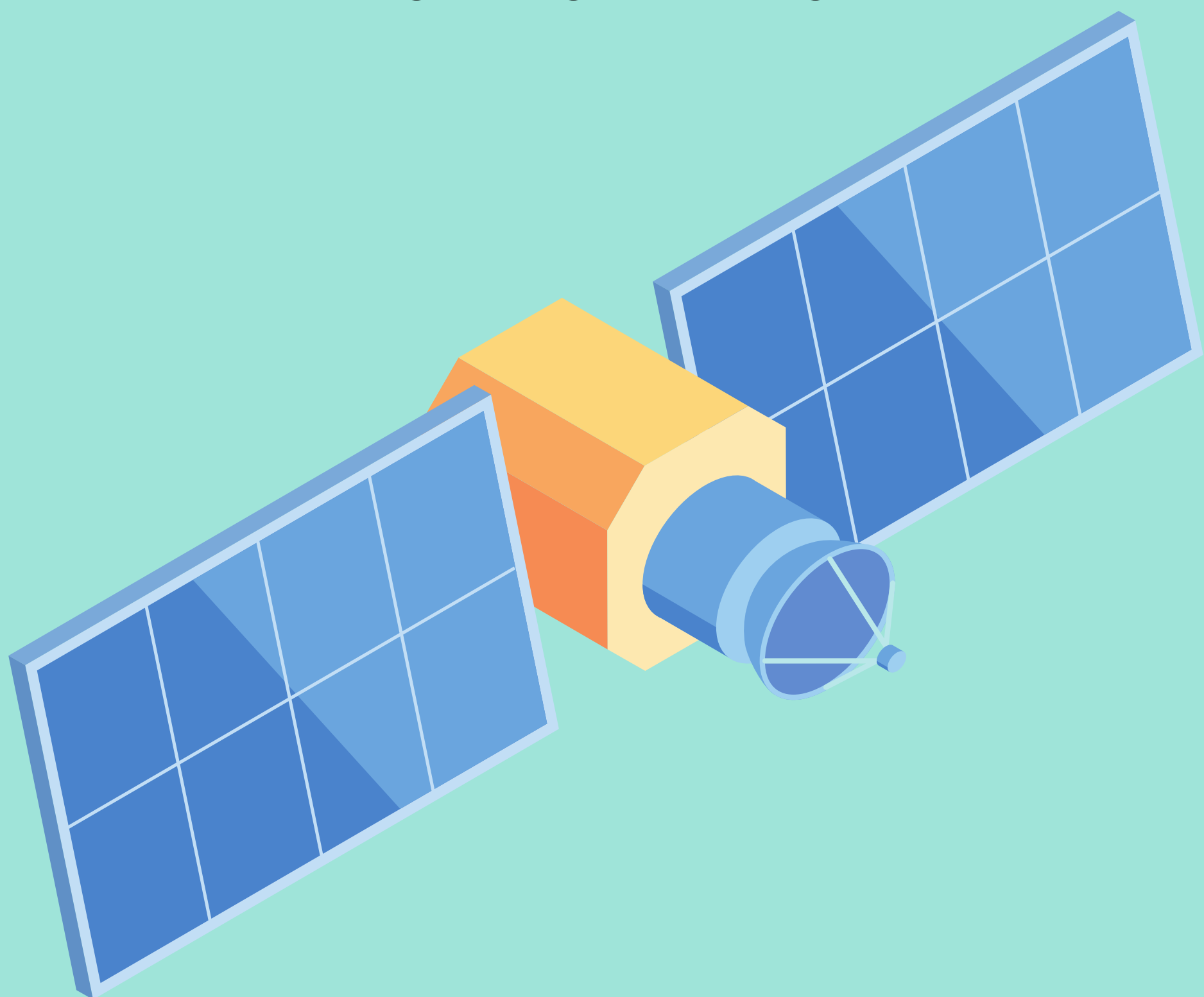


Rapid Deployment

During wildfire events, fire risk maps guide the rapid deployment of firefighting resources to the most vulnerable areas, optimizing response times and efforts.

Dynamic Risk Assessment

Fire risk maps can be updated in real-time with data from weather stations, satellite imagery, and ground observations, providing dynamic risk assessments that inform ongoing firefighting strategies.



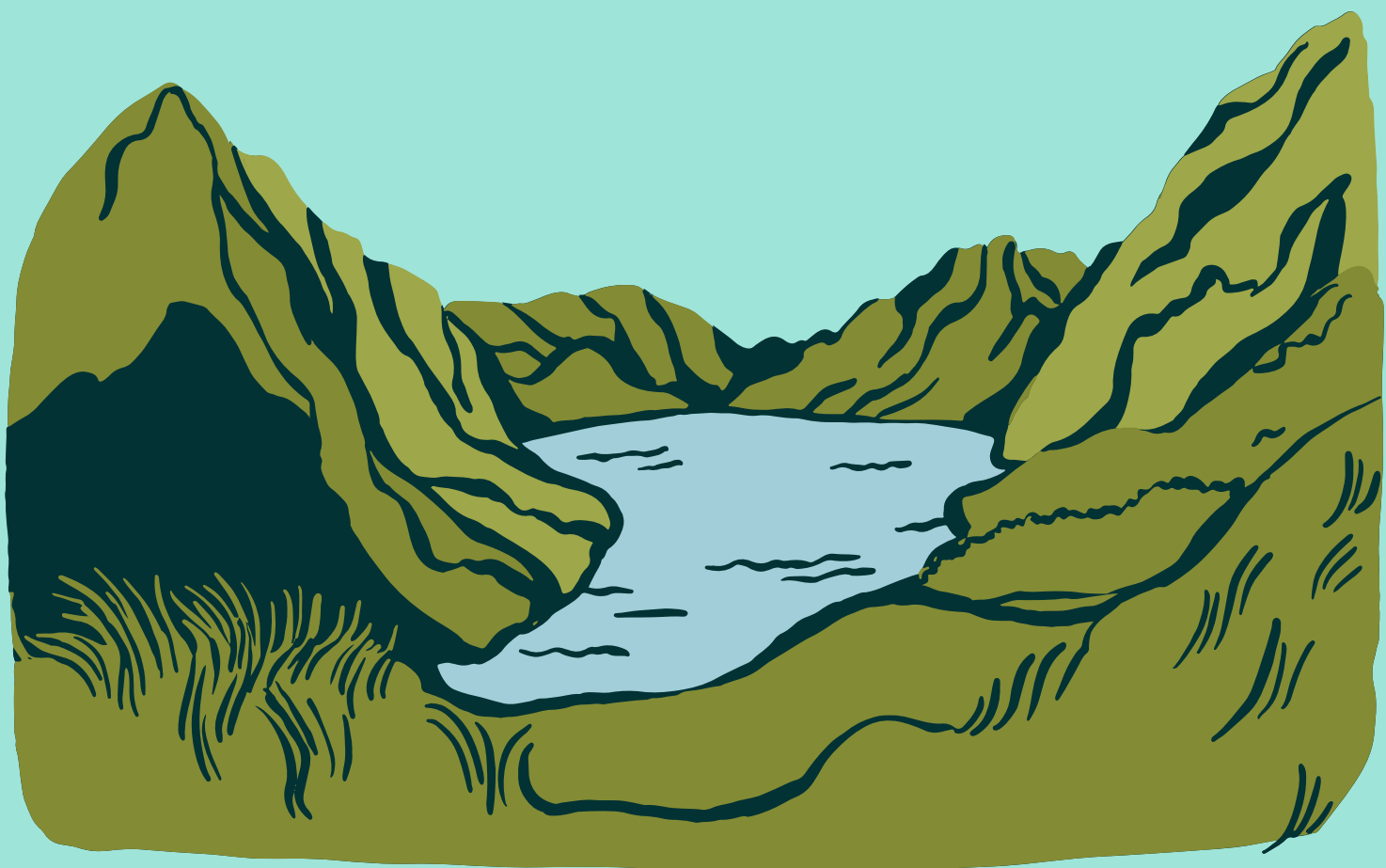


Interagency Coordination

These maps facilitate coordination among various agencies involved in wildfire response, including local fire departments, forestry services, and disaster response teams, by providing a common operational picture of the fire risk landscape.

Enhancing Ecosystem Resilience

Beyond immediate wildfire management, fire risk maps play a role in long-term forest ecosystem resilience. By guiding restoration and reforestation projects in high-risk areas, these maps help in creating landscapes that are more resistant to the spread of wildfires and capable of recovering more quickly after a fire event.





Conclusion

Fire risk maps are pivotal in integrating wildfire risk considerations into forest management practices. They provide a scientific basis for decision-making across the continuum of wildfire prevention, preparedness, and response, ultimately aiming to safeguard lives, properties, and natural resources from the devastating impacts of wildfires.